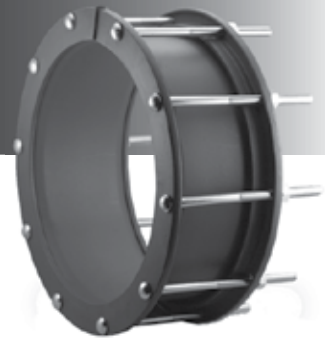




1800 / 1900 COUPLING

INSTALLATION GUIDE



1. Visually inspect the coupling to ensure it is of the required outside diameter for the desired application. Make sure the coupling is complete and there are no missing nuts, bolts or washers.
2. Clean the pipe ends to ensure that all dirt and irregularities have been removed.
3. Disassemble the coupling and slide the appropriate end rings over the appropriate pipe.
4. Lubricate the coupling gaskets and the pipe with potable, NSF certified lube. ROBAR recommends SLIKSTYX.
5. Slide the appropriate gasket over the pipe. The tapered end must face the pipe ends.
6. Slide the center ring over the pipe, and position the center ring over the pipe gap.
Note: For minimum and maximum pipe gaps refer to AWWA C-219.

IMPORTANT: The clearance between the OD of the pipe and the ID of the center ring and end rings must be distributed as evenly as possible. **No more than a 1/8" gap or opening is permissible.** Wooden wedges or plastic shims may be used to help center the center ring. These centering aids may be removed after the coupling is assembled. The wedges or shims must not project into the gasket pocket.

7. Push the gaskets and end rings into position against the center rings. Be sure to maintain an equal spacing between the 2 pipe sections.
8. Slide the bolts into place and tighten nuts using a torque wrench. Torque each bolt alternating between bolts in a "star" pattern to 80 lbs. ft.
9. Pressure test the pipeline prior to backfilling.

CAUTION



Couplings do not prevent pipe pullout.
Suitable restraint should be used when required.

ROBAR INDUSTRIES LTD. - BRITISH COLUMBIA

Phone: (604) 591 - 8811
Toll Free: (800) 663 - 6553
Fax: (604) 591 - 5288

LES PRODUITS INDUSTRIELS ROBAR INC. - QUEBEC

Phone: (450) 641 - 9525
Toll Free: (800) 315 - 9525
Fax: (450) 641 - 4894

Website: www.robarindustries.com / E-mail: waterworks@robarindustries.com