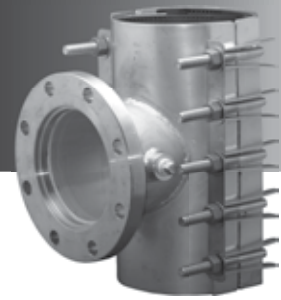




# 6606

## INSTALLATION GUIDE



*All ROBAR Tapping Sleeves are leak tested at the factory prior to shipping.*

1. Visually inspect the tapping sleeve to ensure it is of the required outside diameter and outlet size for the desired application. Make sure the tapping sleeve is complete and there are no missing nuts, bolts or washers.
2. Separate the 2 sections of the tapping sleeves for sleeves 4" - 16" nominal OD. Remove the nuts, washers and lifter bars and be careful not to misplace them. Larger OD tapping sleeves are supplied with 3 sections. For a 3 section sleeve, loosely assemble the 2 back sections. Be sure to leave a 1" - 1-1/2" gap between the 2 sections.
3. Clean the pipe over the entire circumference where the sleeve is to be installed. Be sure that there is no foreign debris (pebbles or dirt) on the clamp gasket or pipe. Lubricate the entire sleeve gasket with a potable, NSF certified lube. ROBAR recommends SLIKSTYX.
4. Place the flange section of the sleeve on the pipe and slide it into position. Be sure that tapered gasket ends are not folded over.
5. Slide the back section(s) over the back of the pipe and into position, lining up the bolts with the receiver lugs. Verify that the gasket are lying flat on the pipe and are not folded over.
6. Install the lifter bars, followed by the stainless steel washers and nuts. Be sure to maintain equal gaps between the sleeve sections when tightening the bolts. Tighten each nut, starting in the center, moving outward while alternating between the sleeve sections. Torque each nut to 80 lbs. ft.
7. Mount the tapping valve to the flange. Be sure to support or block the valve.
8. Connect the tapping machine. Pressure test the tapping sleeve prior to cutting into the pipe. Testing can either be done through the tapping machine or through the 3/4" test plug. When testing through the test plug, before testing apply sufficient Teflon tape when resealing the 3/4" plug.
9. Proceed with the tapping operation. Prior to backfilling, be sure to double check the torque levels on each nut.

**ROBAR INDUSTRIES LTD. - BRITISH COLUMBIA**

Phone: (604) 591 - 8811  
Toll Free: (800) 663 - 6553  
Fax: (604) 591 - 5288

**LES PRODUITS INDUSTRIELS ROBAR INC. - QUEBEC**

Phone: (450) 641 - 9525  
Toll Free: (800) 315 - 9525  
Fax: (450) 641 - 4894

Website: [www.robarindustries.com](http://www.robarindustries.com) / E-mail: [waterworks@robarindustries.com](mailto:waterworks@robarindustries.com)