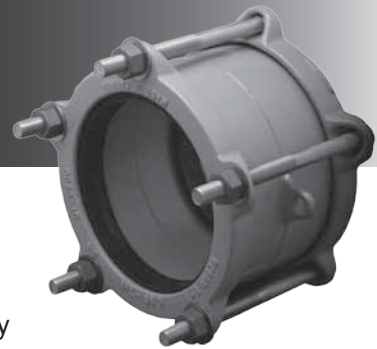




1508 / 1506

CAST DUCTILE IRON COUPLING



APPLICATIONS:

ROBAR **1508 / 1506** Straight and Transition couplings are used to make a non-restrained connection between two pipes of the same nominal size but with same or different ODs. Used in areas where corrosion is a factor, the **1506** body is Epoxy coated with Stainless Steel fasteners.

MATERIAL SPECIFICATIONS:

Center Sleeve: Cast Ductile Iron.
 End Rings: Cast Ductile Iron.
 Gaskets: SBR (Buna S) Rubber.
 Other compounds available.
 Fasteners: **1508** - 5/8" NC HSLA Steel.
1506 - 5/8" NC T304 Stainless Steel.
 Nuts coated with anti-galling compound.
 Torque is 70-80 ft. lbs.
 Coating: Corrosion Protective Epoxy coating.

HOW TO ORDER:

Determine the product number (**1506**) and the pipe OD or end plate combination for each end of the coupling (see page 1.1.1, 1.1.2), and then use the appropriate ordering code as shown in the following example.

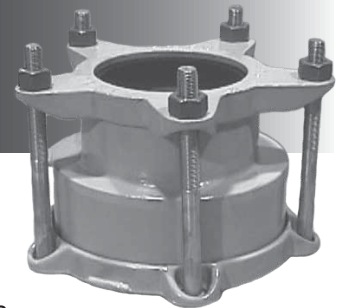
To couple a 6" Steel pipe (6.63" OD) to a 6" C900 PVC pipe (6.90" OD), using SS Bolts the ordering code is:

1506 - 6.63" x 6.90" i.e. **1506 - 6.63 x 6.90**
 product OD (Actual) OD (Actual) or **1506 - 6 D3 x A1**
 number



1508R / 1506R

CAST DUCTILE IRON REDUCING COUPLING



APPLICATIONS:

ROBAR **1508R / 1506R** Straight and Transition couplings are used to make a non-restrained connection between two pipes of the different nominal sizes. Used in areas where corrosion is a factor, the **1506R** body is Epoxy coated with Stainless Steel fasteners.

MATERIAL SPECIFICATIONS:

Center Sleeve: Cast Ductile Iron.
 End Rings: Cast Ductile Iron.
 Gaskets: SBR (Buna S) Rubber.
 Other compounds available.
 Fasteners: **1508R** - 5/8" NC HSLA Steel.
1506R - 5/8" NC T304 Stainless Steel.
 Nuts coated with anti-galling compound.
 Torque is 70-80 ft. lbs.
 Coating: Corrosion Protective Epoxy coating.

HOW TO ORDER:

Determine the product number (**1506R**) and pipe OD or end plate combination for each end of the coupling (see page 1.2.1, 1.2.2), and then use the appropriate ordering code as shown in the following example.

To couple an 8" Ductile Iron pipe (9.05" OD) to a 6" C900 PVC pipe (6.90" OD) using SS Bolts, the ordering code is:

1506R - 9.05" x 6.90" i.e. **1506R - 9.05 x 6.90**
 product OD (Actual) OD (Actual) or **1506R - 8A1 x 6A1**
 number



These products are tested and certified by WQA to NSF/ANSI standard 61

CAUTION



Couplings do not prevent pipe pullout. Suitable restraint should be used when required.

ROBAR INDUSTRIES LTD. - BRITISH COLUMBIA

Phone: (604) 591 - 8811
Toll Free: (800) 663 - 6553
Fax: (604) 591 - 5288

LES PRODUITS INDUSTRIELS ROBAR INC. - QUEBEC

Phone: (450) 641 - 9525
Toll Free: (800) 315 - 9525
Fax: (450) 641 - 4894

Website: www.robarindustries.com / E-mail: waterworks@robarindustries.com