



# 1507

## CAST DUCTILE IRON COUPLING COMPLETE WITH ANODES



### APPLICATIONS:

ROBAR **1507** Straight and Transition Couplings are used to make a non-restrained connection between two pipes of the same nominal size but with same or different ODs. Used in areas where corrosion is a factor, the **1507** body and fasteners are Epoxy coated. Zinc anodes are supplied with this coupling.

### MATERIAL SPECIFICATIONS:

Center Sleeve: Cast Ductile Iron.  
End Rings: Cast Ductile Iron.  
Gaskets: SBR (Buna S) Rubber.  
Other compounds available.  
Fasteners: 5/8" NC HSLA Steel, Epoxy coated bolts.  
Torque is 70-80 ft. lbs.  
Coating: Corrosion Protective Epoxy coating.  
Anodes: Zinc 300 grams minimum.

### HOW TO ORDER:

Determine the product number (**1507**) and the pipe OD or end plate combination for each end of the coupling (see page 1.1.1, 1.1.2), and then use the appropriate ordering code as shown in the following example.

To couple a 6" Steel pipe (6.63" OD) to a 6" C900 PVC pipe (6.90" OD), using MS Bolts with anodes, the ordering code is:

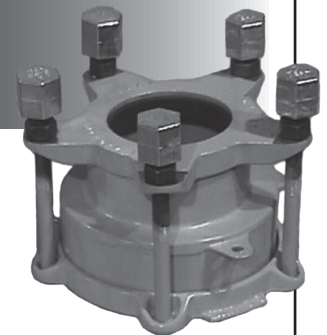
**1507** - 6.63" x 6.90" i.e. **1507 - 6.63 x 6.90**  
product OD (Actual) OD (Actual) or **1507 - 6 D3 x A1**  
number

Note: - Coupling nuts are not Epoxy coated. We ensure continuity by removing the Epoxy coating from the underside of the bolt head and bolt head bearing surface of the end ring.



# 1507R

## CAST DUCTILE IRON REDUCING COUPLING COMPLETE WITH ANODES



### APPLICATIONS:

ROBAR **1507R** Reducing Couplings are used to make a connection between two pipes of different nominal sizes. Used in areas where corrosion is a factor, the **1507R** body and fasteners are Epoxy coated. Zinc anodes are supplied with this coupling.

### MATERIAL SPECIFICATIONS:

Center Sleeve: Cast Ductile Iron.  
End Rings: Cast Ductile Iron.  
Gaskets: SBR (Buna S) Rubber.  
Other compounds available.  
Fasteners: 5/8" NC HSLA Steel, Epoxy coated bolts.  
Torque is 70-80 ft. lbs.  
Coating: Corrosion Protective Epoxy coating.  
Anodes: Zinc 300 grams minimum.

### HOW TO ORDER:

Determine the product number (**1507R**) and pipe OD or end plate combination for each end of the coupling (see page 1.2.1, 1.2.2), and then use the appropriate ordering code as shown in the following example.

To couple an 8" Ductile Iron pipe (9.05" OD) to a 6" C900 PVC pipe (6.90" OD) using MS Bolts with anodes, the ordering code is:

**1507R** - 9.05" x 6.90" i.e. **1507R - 9.05 x 6.90**  
product OD (Actual) OD (Actual) or **1507R - 8A1 x 6A1**  
number

Note: - Coupling nuts are not Epoxy coated. We ensure continuity by removing the Epoxy coating from the underside of the bolt head and bolt head bearing surface of the end ring.



These products are tested and certified by WQA to NSF/ANSI standard 61

### CAUTION



Couplings do not prevent pipe pullout. Suitable restraint should be used when required.

**ROBAR INDUSTRIES LTD. - BRITISH COLUMBIA**

Phone: (604) 591 - 8811  
Toll Free: (800) 663 - 6553  
Fax: (604) 591 - 5288

**LES PRODUITS INDUSTRIELS ROBAR INC. - QUEBEC**

Phone: (450) 641 - 9525  
Toll Free: (800) 315 - 9525  
Fax: (450) 641 - 4894

Website: [www.robarindustries.com](http://www.robarindustries.com) / E-mail: [waterworks@robarindustries.com](mailto:waterworks@robarindustries.com)