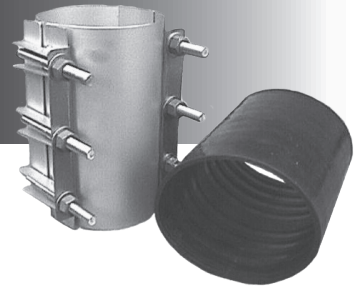




1606

FABRICATED STAINLESS STEEL COUPLING



APPLICATIONS:

ROBAR **1606** Couplings are used to make a non-restrained connection between pipes of the same outside diameter. This coupling is fabricated with a range of .30" (pipe OD \pm .15") and therefore is best suited for smooth pipe with a uniform outside diameter (ex. Steel, PVC, Ductile Iron and HDPE).

MATERIAL SPECIFICATIONS:

Body: T304 Stainless Steel, also available in T316 Stainless Steel*.
Gaskets: SBR (Buna S) Rubber. Other compounds available.
Fasteners: 5/8" NC T304 Stainless Steel*. Nuts coated with anti-galling compound. Torque is 70-80 ft. lbs.

HOW TO ORDER:

Determine the product number (**1606**), number of sections, actual pipe OD, coupling width (see chart below), and then order by using appropriate ordering code as shown in the following example.

If a two section (Style 2) coupling is required with a 12" body length, for a 10" Steel pipe (10.75" OD), the ordering code is:

1606 - 2 - 10.75" x 12" i.e. **1606 - 2 - 10.75 x 12**
product number number of sections OD (Actual) x coupling width

NOMINAL PIPE SIZE	MAX. PRESSURE (Working) LBS./IN. ²	APPROXIMATE SHIPPING WEIGHT (LBS.)					
		STYLE 1 6" SHELL	STYLE 1 12" SHELL	STYLE 2 12" SHELL	STYLE 3 12" SHELL	STYLE 3 18" SHELL	STYLE 3 24" SHELL
4	150	6 lbs.	11	16			
6	150	7 lbs.	12	17			
8	150	8 lbs.	13	18			
10	150		14	19			
12	150		16	24			
14	125		18	25			
16	100				34	46	68
18	100				35	46	69
20	100				37	48	72
22	100				39	50	78
24	100				41	52	84

All dimensions are in inches.

Available only in 6" increments.

- Note:
- * Refers to chemically treating Stainless Steel after welding ("Pickled/Passivated") to return it to its original appearance.
 - Other sizes and pressure ratings are available. Please contact ROBAR's Technical Sales Department for additional information.
 - Bolt Torque limit for all sizes is 80 ft./lbs.
 - Maximum working pressures are achieved with smooth OD pipes and with careful installation. Rough pipe surfaces and careless installation will reduce attainable pressures.
 - ROBAR **9626** Adjustable Stainless Steel Inserts are recommended for use on Polyethylene Pipe.
 - Refer to standards page.
 - 4.80" is the minimum OD **1606** Couplings can be sized to fit.
 - AWWA C219 does not apply to this coupling.

ROBAR INDUSTRIES LTD. - BRITISH COLUMBIA

Phone: (604) 591 - 8811
Toll Free: (800) 663 - 6553
Fax: (604) 591 - 5288

LES PRODUITS INDUSTRIELS ROBAR INC. - QUEBEC

Phone: (450) 641 - 9525
Toll Free: (800) 315 - 9525
Fax: (450) 641 - 4894

Website: www.robarindustries.com / E-mail: waterworks@robarindustries.com