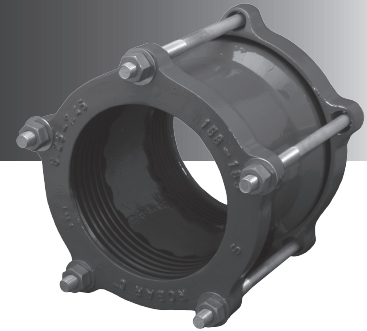




1728 / 1726

CAST DUCTILE IRON COUPLING MULTI-FIT



APPLICATIONS:

ROBAR **1728 / 1726** couplings are used to make a non-restrained connection between two pipes of the same nominal size but with same or different ODs. Up to 150 PSI working pressure. Angular deflection up to 8°. Stab Fit.

MATERIAL SPECIFICATIONS:

Center Sleeve: Cast Ductile Iron.
End Rings: Cast Ductile Iron.
Gaskets: SBR (Buna S).
Fasteners: **1728** - 5/8" Low Alloy Steel.
1726 - 5/8" T304 Stainless Steel.
Torque is 70-80 ft. lbs.
Coating: Fusion Bonded Epoxy Coated.

HOW TO ORDER:

Determine the product number (**1728**) and order the nominal size you require (see 1736AS chart below) and then use the appropriate ordering code as shown in the example.

To couple (using mild steel fasteners), a 4" steel pipe (4.50" OD) to an 4" AC pipe (5.25" OD), the ordering code is:

1728 x 4" i.e. **1728 x 6**
product coupling
number range

(See ordering chart below)

Note: - Lubricate Stainless Steel Bolts to prevent 'galling' of the Nuts.



1736AS

CAST STAINLESS STEEL COUPLING MULTI-FIT PLUS



APPLICATIONS:

ROBAR **1736AS** are 100% Stainless Steel couplings used to make a non-restrained connection between two pipes of the same nominal size but with same or different ODs. Up to 150 PSI working pressure. Angular deflection up to 8°. Stab Fit.

MATERIAL SPECIFICATIONS:

Center Sleeve: T304 Stainless Steel.
End Rings: T304 Stainless Steel.
Gaskets: SBR (Buna S).
Fasteners: 5/8" T304 Stainless Steel.
Torque is 70-80 ft. lbs.

HOW TO ORDER:

Determine the product number (**1736AS**) and order the nominal size you require (see below) and then use the appropriate ordering code as shown in the example.

To couple a 6" steel pipe (6.63" OD) to a 6" ductile pipe (6.90" OD), the ordering code is:

1736AS x 6" i.e. **1736AS x 6**
product coupling
number range

PIPE SIZES		PIPE OD RANGES		WEIGHTS		BARREL LENGTH		BOLT QTY
IN.	MM.	IN.	MM.	LBS.	KG.	IN.	MM.	
2	50	2.35-2.63	60-67	10	4	5	125	2
2.5	63	2.69-2.88	68-73	13	6	5	125	2
4	100	4.20 - 5.33	112 - 135	25	11	6	150	4
6	150	6.25 - 7.45	166 - 189	35	16	6	150	5
8	200	8.40 - 9.79	217 - 249	50	23	10	250	6
10	250	10.70 - 12.12	272 - 308	57	26	10	250	7
12	300	12.75 - 14.38	325 - 365	65	30	10	250	8

Note: - Lubricate Stainless Steel Bolts to prevent 'galling' of the Nuts.



Couplings do not prevent pipe pullout.
Suitable restraint should be used when required.

ROBAR INDUSTRIES LTD. - BRITISH COLUMBIA

Phone: (604) 591 - 8811
Toll Free: (800) 663 - 6553
Fax: (604) 591 - 5288

LES PRODUITS INDUSTRIELS ROBAR INC. - QUEBEC

Phone: (450) 641 - 9525
Toll Free: (800) 315 - 9525
Fax: (450) 641 - 4894

Website: www.robarindustries.com / E-mail: waterworks@robarindustries.com