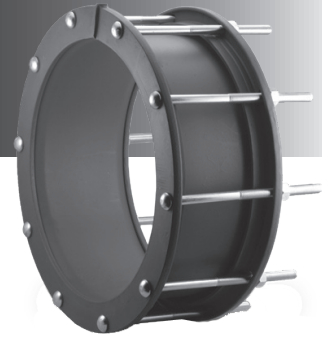




1808 / 1906

FABRICATED STEEL COUPLING - SERIES 200



APPLICATIONS:

ROBAR BAKER

Fabricated 1808 / 1906 Non-Restraining Couplings are used to flexibly couple larger diameter pipe. The 1906 is Epoxy coated with stainless steel fasteners. 4" through 120" available. Can be used to couple concrete pressure pipe together.

MATERIAL SPECIFICATIONS:

Center Sleeve: Mild Steel.
 End Rings: Mild Steel.
 Gaskets: SBR (Buna S) Rubber.
 Other compounds available.
 Fasteners: **1808** - 5/8" NC HSLA Steel.
1906 - 5/8" Stainless Steel.
 Nuts coated with anti-galling compound.
 Torque is 70-80 ft. lbs.
 Coating: **1808** - Shop Coat.
1906 - Epoxy coated - liquid or fusion.

HOW TO ORDER:

Determine the product number (**1808**), actual pipe OD, Center Sleeve thickness, Center Sleeve length and then use the appropriate ordering code (see chart below), as shown in the following example.

To couple an 18" Steel pipe (18.00" OD) with a 7" long by 1/4" thick Center Sleeve with shop coat and MS bolts, the ordering code is:

1808 - 18.00" - 1/4" x 7"
 product OD (Actual) thickness sleeve
 number length

i.e. **1808 - 18.00 - 1/4 x 7**

Couplings can be manufactured for any diameter. Examples below are Ductile and Steel ODs only. Couplings listed are for common sizes. Please contact ROBAR for sizes not listed below.

NOMINAL PIPE SIZE	OD PIPE	OVERALL OUTSIDE DIAMETER	CENTER SLEEVE T x L	FASTENERS NO. x DIA. x LENGTH	APPROXIMATE SHIPPING WEIGHT	
					LBS.	KG.
4	4.50	8.50	1/4 x 5	5/8 x 8	22	10
	4.80	9.17	1/4 x 5	5/8 x 8	22	10
6	6.63	11.00	1/4 x 7	5/8 x 11	26	12
	6.90	11.27	1/4 x 7	5/8 x 11	26	12
8	8.63	12.313	1/4 x 7	5/8 x 11	33	15
	9.05	12.563	1/4 x 7	5/8 x 11	33	15
10	10.75	14.438	1/4 x 7	5/8 x 11	40	18
	11.10	14.625	1/4 x 7	5/8 x 11	40	18
12	12.75	17.125	1/4 x 7	5/8 x 11	60	27
	13.20	17.563	1/4 x 7	5/8 x 11	66	30
14	14.00	18.375	1/4 x 7	5/8 x 11	80	36
	15.30	19.688	3/8 x 7	5/8 x 11	90	41
16	16.00	20.125	1/4 x 7	10 - 5/8 x 11	74	33.6
	17.40	21.75	3/8 x 7	10 - 5/8 x 11	87	39.6
18	18.00	22.125	1/4 x 7	10 - 5/8 x 11	81	36.8
	19.50	23.875	3/8 x 7	12 - 5/8 x 11	96	43.6
20	20.00	24.125	1/4 x 7	12 - 5/8 x 11	90	40.9
	21.60	26.00	3/8 x 7	12 - 5/8 x 11	107	48.6
24	24.00	28.125	1/4 x 7	14 - 5/8 x 11	107	48.6
	25.80	30.188	3/8 x 7	14 - 5/8 x 11	127	57.7
30	30.00	34.125	1/4 x 7	16 - 5/8 x 11	130	58.9
	32.00	36.375	3/8 x 7	16 - 5/8 x 11	156	71.2
36	36.00	40.125	1/4 x 7	18 - 5/8 x 11	155	70.30
	38.30	42.688	3/8 x 7	18 - 5/8 x 11	185	83.9

All dimensions are in inches.

CAUTION



Couplings do not prevent pipe pullout. Suitable restraint should be used when required.

Note: - ROBAR inventories couplings in sizes 4" through 36" in both 1/4" and 3/8" thicknesses. A 1/4" thickness sleeve is used for Steel pipe ODs and 3/8" thickness sleeve is used for Ductile / C900 pipe ODs.
 - Couplings are fabricated to exact ODs.
 - Contact ROBAR for working pressures.

ROBAR INDUSTRIES LTD. - BRITISH COLUMBIA

Phone: (604) 591 - 8811
 Toll Free: (800) 663 - 6553
 Fax: (604) 591 - 5288

LES PRODUITS INDUSTRIELS ROBAR INC. - QUEBEC

Phone: (450) 641 - 9525
 Toll Free: (800) 315 - 9525
 Fax: (450) 641 - 4894

Website: www.robarindustries.com / E-mail: waterworks@robarindustries.com