



1848 / 1946 SERIES 220

FABRICATED STEEL REDUCING COUPLING



APPLICATIONS:

ROBAR BAKER

Fabricated **1848 / 1946** Non-Restraining Steel Reducing Couplings are used to flexibly couple two pipes of different nominal size.

MATERIAL SPECIFICATIONS:

Center Sleeve: Mild Steel.
 End Rings: Mild Steel.
 Gaskets: SBR (Buna S) Rubber. Other compounds available.
 Fasteners: **1848** - 5/8" NC HSLA Steel. **1946** - T304 NC Stainless Steel. Nuts coated with anti-galling compound. Torque is 70-80 ft. lbs.
 Coating: **1848** - Shop Coat. **1946** - Epoxy Coat - liquid or fusion. (AWWA C210 or C213)

HOW TO ORDER:

Determine the product number (), Center Sleeve thickness, Center Sleeve length and then use the appropriate ordering code, as shown in the following example.

To couple a 16" Ductile pipe (17.40" OD) to a 16" Steel pipe with a 10" long by 1/4" thick Center Sleeve, the ordering code is:

1848 - 17.40" x 16.00" - 1/4" x 10"
 product OD (Actual) OD (Actual) thickness sleeve
 number length

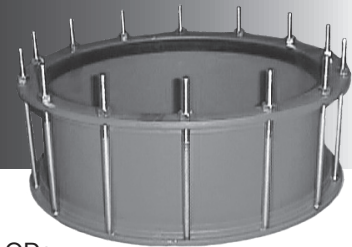
i.e. **1848 - 17.40 x 16.00 - 1/4 x 10**

Note: - Reducing couplings are available with minimum barrel lengths of 10". - Contact ROBAR for working pressures.



1858 / 1956 SERIES 208

FABRICATED STEEL LONG SLEEVE COUPLING



APPLICATIONS:

ROBAR BAKER

Fabricated **1858 / 1956** Long Sleeve Couplings are used to join large pipe gaps with the same ODs.

MATERIAL SPECIFICATIONS:

Center Sleeve: Mild Steel.
 End Rings: Mild Steel.
 Gaskets: SBR (Buna S) Rubber. Other compounds available.
 Fasteners: **1858** - 5/8" NC HSLA Steel. **1956** - T304 Stainless Steel. Nuts coated with anti-galling compound. Torque is 70-80 ft. lbs.
 Coating: **1858** - Shop Coat. **1956** - Epoxy Coated - liquid or fusion. (AWWA C210 or C213)

HOW TO ORDER:

Determine the product number (**1858, etc.**), **actual pipe OD of both pieces of pipe**, Center Sleeve thickness, Center Sleeve length and then use the appropriate ordering code, as shown in the following example.

To couple a 16" Ductile pipe (17.40" OD) to a 16" Ductile pipe with a 24" long by 1/4" thick Center Sleeve, the ordering code is:

1858 - 17.40" x 17.40" - 1/4" x 24"
 product OD (Actual) OD (Actual) thickness sleeve
 number length

i.e. **1858 - 17.40 x 17.40 - 1/4 x 24**

Note: - Please contact ROBAR for special lengths and dimensions. - Contact ROBAR for working pressures.



ROBAR INDUSTRIES LTD. - BRITISH COLUMBIA

Phone: (604) 591 - 8811
 Toll Free: (800) 663 - 6553
 Fax: (604) 591 - 5288

LES PRODUITS INDUSTRIELS ROBAR INC. - QUEBEC

Phone: (450) 641 - 9525
 Toll Free: (800) 315 - 9525
 Fax: (450) 641 - 4894

Website: www.robarindustries.com / E-mail: waterworks@robarindustries.com