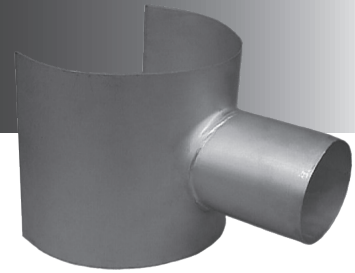




# 3606

## STAINLESS STEEL SEWER SADDLE



### APPLICATIONS:

ROBAR **3606** Sewer Saddles are used to make a 4" inlet branch to a gravity main sewer line (4" - 4.50" OD is standard). Particularly suited for High Density Polyethylene pipe. Strapping material is not included with product.

### MATERIAL SPECIFICATIONS:

Body: T304 Stainless Steel, fully passivated\*.  
Gaskets: 7.5" x 7.5" x .5" Neoprene.  
Fasteners: Not included.

### HOW TO ORDER:

Determine the product number (**3606**), the OD of sewer main and the actual OD of the branch, then order by using the appropriate ordering code as shown in the following example.

If a 4" branch (4.50" OD) off of a 12" HDPE sewer main is required, the ordering code is:

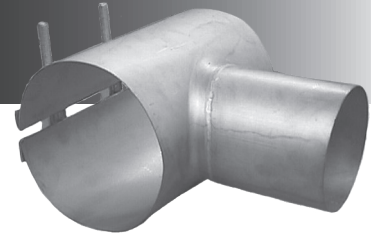
**3606** - 12.75" x 4.50" i.e. **3606 - 12.75 x 4.50**  
product main OD branch OD  
number

Note: \* Refers to chemically treating Stainless Steel after welding ("Pickled/Passivated") to return it to its original appearance.  
- Standard branch outlet is 4" nominal (4.63" OD) accepts 4.50" OD.  
- Special designs, lengths or diameters may be obtained from the factory on request.



# 3626 / 3696

## STAINLESS STEEL SEWER SADDLE



### APPLICATIONS:

ROBAR **3626 / 3696** Sewer Saddles are used to make a 4" inlet branch to a main sewer line (4" - 4.50" OD is standard). Particularly suited for High Density Polyethylene pipe.

### MATERIAL SPECIFICATIONS:

Body: T304 Stainless Steel, fully passivated\*.  
Gaskets: 7.5" x 7.5" x .5" Neoprene.  
Fasteners: 1/2" NC T304 Stainless Steel Studs and washers.  
Nuts coated with anti-galling compound.  
Torque is 45 ft. lbs.

### HOW TO ORDER:

Determine the product number (**3626, etc.**), the OD of sewer main and the actual OD of the branch, then order by using the appropriate ordering code as shown in the following example.

If a 4" branch (4.50" OD) off of a 12" HDPE sewer main is required, the ordering code is:

**3626** - 12.75" x 4.50" i.e. **3626 - 12.75 x 4.50**  
product main OD branch OD  
number

**3626** - Outlet is opposite to closure.

**3696** - Outlet is 90° to closure.

Note: \* Refers to chemically treating Stainless Steel after welding ("Pickled/Passivated") to return it to its original appearance.  
- Standard branch outlet is 4" nominal (4.63" OD) accepts 4.50" OD.  
- Special designs, lengths or diameters may be obtained from the factory on request.

**ROBAR INDUSTRIES LTD. - BRITISH COLUMBIA**

Phone: (604) 591 - 8811  
Toll Free: (800) 663 - 6553  
Fax: (604) 591 - 5288

**LES PRODUITS INDUSTRIELS ROBAR INC. - QUEBEC**

Phone: (450) 641 - 9525  
Toll Free: (800) 315 - 9525  
Fax: (450) 641 - 4894

Website: [www.robarindustries.com](http://www.robarindustries.com) / E-mail: [waterworks@robarindustries.com](mailto:waterworks@robarindustries.com)