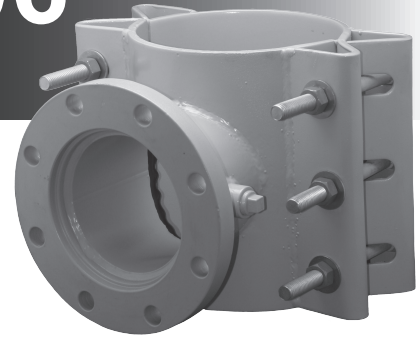




6808 / 6806 / 6906

CARBON STEEL TAPPING SLEEVE

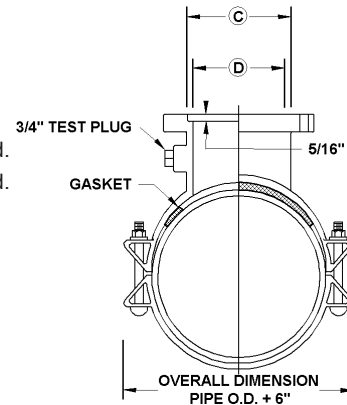


APPLICATIONS:

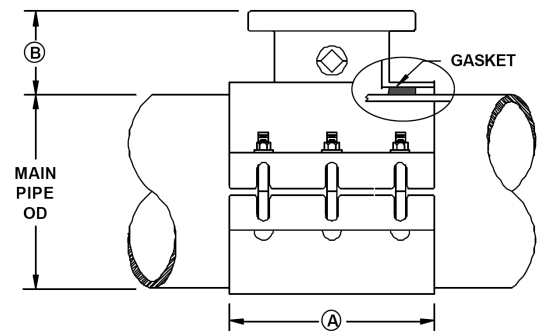
ROBAR **6808 / 6906 / 6906** Tapping Sleeves are used to make a branch outlet off a main supply line on Steel, Ductile Iron, Cast Iron, Asbestos Cement and C900 pipe. Not recommended for Concrete Pressure pipe or HDPE.

MATERIAL SPECIFICATIONS:

- Body: Shell: Carbon Steel
Outlet Pipe: Schedule 40 Carbon Steel or equivalent.
- Flange: Mild Steel as per AWWA C207 class D
- Fasteners: **6808** - 3/4" NC HSLA.
6806 - 3/4" NCT304 Stainless Steel. Nuts coated with anti-galling compound.
6906 - 3/4" NCT304 Stainless Steel. Nuts coated with anti-galling compound.
Torque is 80 ft. lbs.
- Gaskets: NBR (Buna N) Rubber.
- Test Plug: 3/4" NPT Mild Steel.
- Coatings: **6808** - Enamel coated.
6806 - Enamel coated.
6906 - Corrosion Protective Epoxy coating.



TAPPING SLEEVE DATA						
NOMINAL OUTLET SIZE	A	B	C (DIA.)	D (DIA.)	BOLT QTY.	BOLT SIZE
4	12	5.19	5.06	4	6	3/4
6	12	5.63	7.06	6	6	3/4
8	16	6.00	9.06	8	8	3/4
10	20	6.50	11.06	10	10	3/4
12	20	6.75	13.06	12	10	3/4



HOW TO ORDER:

Determine the product number (**6808**, etc.), nominal main size, nominal outlet size and the high limit number (see table above) and then order using the appropriate ordering code as shown in the following example.

If an Enamel coated mild steel tapping sleeve is required to install a 8" outlet on a 12" Ductile Iron pipe (13.20" OD), the ordering code is:

6808 - 12" x 8" - 13.30" i.e. **6808 - 12 x 8 - 13.30**
product nom. main nom. outlet high end
number size size

Carbon Steel tapping sleeves rated for 150 PSI working pressure (contact Robar for higher pressure ratings).



This product is tested and certified by WQA to NSF/ANSI standard 61

ROBAR INDUSTRIES LTD. - BRITISH COLUMBIA
Phone: (604) 591 - 8811
Toll Free: (800) 663 - 6553
Fax: (604) 591 - 5288

LES PRODUITS INDUSTRIELS ROBAR INC. - QUEBEC
Phone: (450) 641 - 9525
Toll Free: (800) 315 - 9525
Fax: (450) 641 - 4894

Website: www.robarindustries.com / E-mail: waterworks@robarindustries.com



6808 / 6806 / 6906

CARBON STEEL TAPPING SLEEVE

NOMINAL PIPE SIZE	BY X	OUTLET SIZE	FITTING LENGTH	NUMBER OF BOLTS	APPROXIMATE SHIPPING WEIGHT		WORKING RANGE	
					LBS.	KG.	LOW	HIGH
6	X	4	12	6	50	23	6.90	7.20
		6**			50	23		
8	X	4	12	6	65	29	8.50	8.90
		6			80	36	8.90	9.30
		8**	16	8	90	41	9.30	9.70
10	X	4	12	6	68	31	9.70	10.10
		6			70	32	10.10	10.50
		8	16	8	92	42	10.50	10.90
		10**	20	10	118	54	10.90	11.30
12	X	4	12	6	92	42	12.10	12.50
		6			100	45	12.50	12.90
		8	16	8	115	52	12.90	13.30
		10	20	10	130	59	13.30	13.60
		12**			170	77		
14	X	4	12	6	95	43	13.60	14.05
		6			102	56	14.05	14.50
		8	16	8	124	68	14.50	14.95
		10	20	10	150	91	14.95	15.40
		12	20	10	200	102	15.30	15.75
16	X	4	12	6	105	47	15.75	16.15
		6			114	62	16.15	16.60
		8	16	8	136	74	16.60	17.05
		10	20	10	162	96	17.05	17.50
		12			212	108	17.40	17.85
18	X	4	12	6	132	60	17.85	18.30
		6			154	70	18.30	18.75
		8	16	8	180	82	18.75	19.20
		10	20	10	230	105	19.20	19.65
		12			255	116	19.50	19.95
20 - 22	X	4	12	6	137	62	19.90	20.40
		6			159	72	20.40	20.90
		8	16	8	185	84	20.90	21.40
		10	20	10	235	107	21.40	21.90
		12			260	118	21.90	22.15
24	X	4	12	6	167	76	22.15	22.70
		6			189	86	22.70	23.25
		8	16	8	215	98	23.25	23.75
		10	20	10	265	120	23.75	24.25
		12			290	132	24.25	24.75

All dimensions are in inches.

For a 4" tapping sleeve, consider using a **6606**, **6404** or **6506**.

Note: * The high limit of the range is used in the ordering code.

** When ordering size on size Tapping Sleeves, a 1/2" undersize cutter is required. Size on size for steel size is unavailable.

- Other working ranges are available on request.

ROBAR INDUSTRIES LTD. - BRITISH COLUMBIA

Phone: (604) 591 - 8811

Toll Free: (800) 663 - 6553

Fax: (604) 591 - 5288

LES PRODUITS INDUSTRIELS ROBAR INC. - QUEBEC

Phone: (450) 641 - 9525

Toll Free: (800) 315 - 9525

Fax: (450) 641 - 4894

Website: www.robarindustries.com / E-mail: waterworks@robarindustries.com