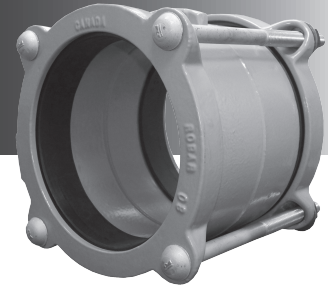




Stab-Fit



APPLICATIONS:

ROBAR **Stab-Fit** couplings can be used to couple dissimilar ODs in the same nominal size group. The **Stab-Fit** coupling comes with a stab-fit design, allowing for use on Ductile Iron, Steel, PVC, HDPE, and Old Cast Iron pipe.

MATERIAL SPECIFICATIONS:

- Center Sleeve: Cast Ductile Iron
- End Rings: Cast Ductile Iron.
- Gaskets: SBR.
- Fasteners:
 - 5/8" NC HSLA Steel. **1408SF, 1508SF**
 - 5/8" T304 Stainless Steel. **1406SF, 1506SF**
 - Nuts coated with anti-galling compound.
 - Torque is 70 ft. lbs.
- Coating:
 - 2 coats of Enamel. **1408SF, 1406SF**
 - Corrosion Protective Epoxy coating. **1506SF, 1508SF**

HOW TO ORDER:

Determine the product number (**1506SF**, etc.), and order the nominal size you require and then use the appropriate ordering code as shown in the example.

To couple 6" steel pipe (6.63"OD) to a 6" ductile pipe (6.90"), using SS bolts and epoxy coating, the ordering code is:

1506SF x 6" i.e. **1506SF x 6**
product coupling
number range

NOMINAL SIZE	WORKING RANGE	BARREL LENGTH	NO. OF BOLTS	WEIGHT LBS.
4	4.50 - 5.10	5	4	16
6	6.63 - 7.22	5	4	24
8	8.63 - 9.30	5	5	28
10	10.75 - 11.40	7	7	49
12	12.75 - 13.50	7	8	55

All dimensions are in inches.

Coupling rated for 150 PSI working pressure.

- Note:
- Available in 7" barrels
 - Stab-Fit design allows for installation without dis-assembly
 - The use of a pipe insert is required when installing coupling on HDPE.



These products are tested and certified by WQA to NSF/ANSI standard 61



Couplings do not prevent pipe pullout. Suitable restraint should be used when required.

ROBAR INDUSTRIES LTD. - BRITISH COLUMBIA

Phone: (604) 591 - 8811
Toll Free: (800) 663 - 6553
Fax: (604) 591 - 5288

LES PRODUITS INDUSTRIELS ROBAR INC. - QUEBEC

Phone: (450) 641 - 9525
Toll Free: (800) 315 - 9525
Fax: (450) 641 - 4894

Website: www.robarindustries.com / E-mail: waterworks@robarindustries.com