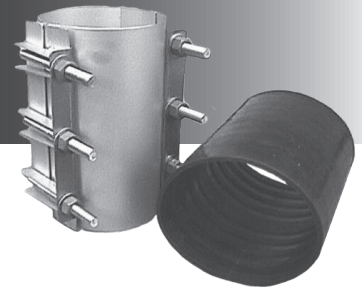




# 1606 COUPLING

## INSTALLATION GUIDE



1. Check to ensure that the OD of the pipe corresponds with the coupling being installed.
2. Ensure that the pipe surface is clean and free of irregularities.
3. Lubricate pipes and the inside of the gasket to aid the installation procedure and to allow the gasket to seat more uniformly on the pipe.
4. Slide the gasket onto one of the pipes being coupled.
5. Line up the two lengths of pipe and slide the gasket, centering the gasket over the joint.
6. Ensure that the pipes are in line when the coupling is installed. Any deflection should be achieved after installation and should be kept to a minimum. For more details contact ROBAR's Technical Sales Department. Pipe gap should be kept below 1".
7. Lubricate the outside of the gasket to allow the stainless steel shell to slide smoothly over the gasket during the torquing procedure. ROBAR recommends NSF61 certified SLIKSTYX.
8. Install the stainless steel shell over the gasket, sliding the lifter bar(s) over and behind the lugs.
9. Tighten nuts in random sequence and in uniform steps up to approximately 75-80 ft. lbs. of torque.
10. Pressure test line prior to backfilling.
11. For recommended working pressures and specifications, consult the ROBAR **1606** Product Information.

ROBAR Adjustable Inserts are recommended on flexible plastic pipe, such as Polyethylene, to provide internal pipe support.

### CAUTION



Couplings do not prevent pipe pullout.  
Suitable restraint should be used when required.

**ROBAR INDUSTRIES LTD. - BRITISH COLUMBIA**

Phone: (604) 591 - 8811  
Toll Free: (800) 663 - 6553  
Fax: (604) 591 - 5288

**LES PRODUITS INDUSTRIELS ROBAR INC. - QUEBEC**

Phone: (450) 641 - 9525  
Toll Free: (800) 315 - 9525  
Fax: (450) 641 - 4894

Website: [www.robarindustries.com](http://www.robarindustries.com) / E-mail: [waterworks@robarindustries.com](mailto:waterworks@robarindustries.com)