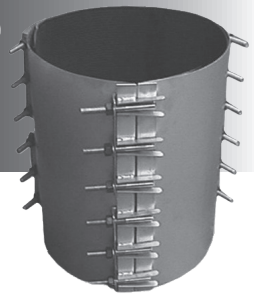




5636 REPAIR CLAMP

INSTALLATION GUIDE



A standard feature of the 5636 (Style 3) ROBAR Repair Clamp is its ease of installation. All Robar Repair Clamps are pre-formed at the factory, allowing for easy installation.

1. Remove the clamp from its box. Ensure it has the required outside diameter for the desired application. Visually inspect the clamp to make certain there are no missing nuts, washers, or lifter bars.
2. Assemble the clamp sections together, leaving one section open to wrap around the pipe. Be sure to leave a 1" - 1-1/2" gap between the clamp sections.
3. Clean the pipe over the entire circumference where the clamp is to be installed. Be sure that there is no foreign debris (pebbles or dirt) on the clamp gasket or pipe. Lubricate the entire clamp gasket with a potable, NSF certified lube. ROBAR recommends SLIKSTYX.
4. A minimum of 4" of clamp is recommended beyond each side of the repair area. (i.e. If a 4" longitudinal crack is being repaired, a 12" long clamp is recommended). Also, a small hole can be drilled at each end of the crack to prevent it from spreading.
5. Wrap the clamp around the pipe, making sure not to fold over the tapered gasket ends.
6. Grasp the lifter bar on the bolts and pull it up and out until it snaps into position over the receiver lugs. Tighten the nuts slightly by hand to prevent the lifter bar from lifting.
7. Tighten the nuts, using a torque wrench, evenly and incrementally. Start in the center, and move outward, criss-crossing between sections. Be sure to maintain an equal distance between the 3 clamp sections. Torque each nut to 80 ft. lbs.

ROBAR INDUSTRIES LTD. - BRITISH COLUMBIA

Phone: (604) 591 - 8811
Toll Free: (800) 663 - 6553
Fax: (604) 591 - 5288

LES PRODUITS INDUSTRIELS ROBAR INC. - QUEBEC

Phone: (450) 641 - 9525
Toll Free: (800) 315 - 9525
Fax: (450) 641 - 4894

Website: www.robarindustries.com / E-mail: waterworks@robarindustries.com