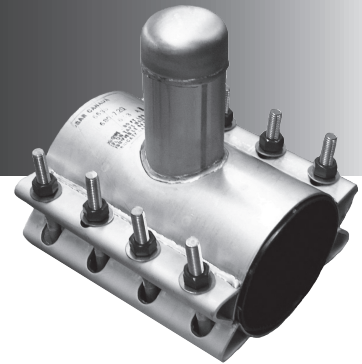




# 6636AS

## INSTALLATION GUIDE



1. Visually inspect the Abandon Sleeve to ensure it is of the required outside diameter for the desired application. Make sure the Abandon Sleeve is complete and there are no missing nuts, bolts or washers.
2. Clean the pipe over the entire circumference where the sleeve is to be installed. Be sure that there is no foreign debris (pebbles or dirt) on the clamp gasket or pipe. Lubricate the sleeve gasket with a potable, NSF certified lube. ROBAR recommends SLIKSTYX.
3. Once the main stop is closed, remove the copper tubing for the corporation stop if still attached. Place the encapsulating section of the sleeve over the corp stop and onto the pipe. Make sure the tapered gaskets are folded over.
4. Slide the back section(s) over the back of the pipe and into position.
  - A. Bolt Bracket Closure: Insert the bolts into the corresponding bolt holes and tighten the nuts by hand.
  - B. Finger-Bolt Closure: Slide the back section and line up the bolts with the receiver lugs. Install the lifter bars, washers and nuts.

Be sure to maintain equal gaps between the sleeve sections and verify that the gaskets are not folded over.

5. Tighten each nut, starting in the center, moving outward while alternating between the sleeve sections. Torque each nut to 80 ft. lbs.

**ROBAR INDUSTRIES LTD. - BRITISH COLUMBIA**

Phone: (604) 591 - 8811  
Toll Free: (800) 663 - 6553  
Fax: (604) 591 - 5288

**LES PRODUITS INDUSTRIELS ROBAR INC. - QUEBEC**

Phone: (450) 641 - 9525  
Toll Free: (800) 315 - 9525  
Fax: (450) 641 - 4894

Website: [www.robarindustries.com](http://www.robarindustries.com) / E-mail: [waterworks@robarindustries.com](mailto:waterworks@robarindustries.com)