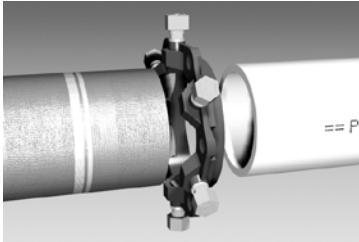


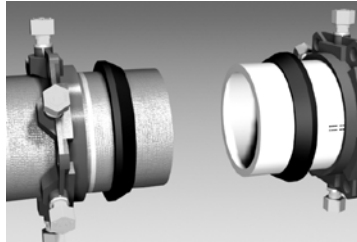


# FABRICATED RESTRAINED COUPLING INSTALLATION INSTRUCTIONS



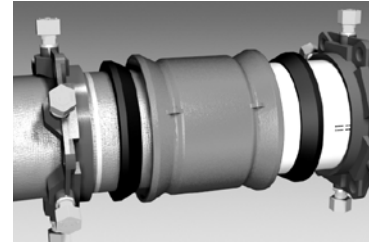
**1. Identify the pipe.**

Clean and inspect the pipe ends. Beveling of the ends is not necessary.

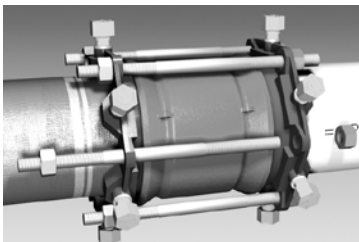


- 2. Place the end rings on the pipes with the lip extensions toward the pipe ends. For 14 inch and above Ductile Iron pipe the restraint ring will be the Series 1100 MEGALUG® and for C905 PVC 14 inch and above the restraint ring will be the Series 2000PV MEGALUG. Lubricate and install the Standard Mechanical Joint Gasket.**

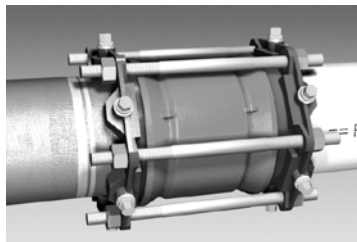
Improved Mechanical Joint gasket is used on 14 inch and above.



- 3. Center the sleeve body over the ends of the pipes while maintaining a 1/2" to 1" gap between the pipe ends. Slide the gaskets and end rings toward the sleeve body.**



- 4. Install the threaded rods and hand tighten the nuts on each end. Gradually tighten the nuts in an alternating manner until the proper torque value has been reached, while maintaining the same distance between the rings and the ends of the body at all points around the rings. For 14 inch through 24 inch torque to 75-90 ft.-lbs., for 30 and 36 torque to 120-150 ft.-lbs.**



- 5. Hand tighten the actuating screws until all wedges are touching the pipes. Continue tightening the screws in an alternating manner until the torque limiting heads twist off. The screws may bottom out during this step.**

---

## ROBAR INDUSTRIES LTD.

Surrey, British Columbia  
Phone: 1-800-663-6553

Boucherville, Quebec  
Phone: 1-800-315-9525

Calhoun, Georgia  
Phone: 1-706-624-4404

Website: [www.robarindustries.com](http://www.robarindustries.com) / E-mail: [waterworks@robarindustries.com](mailto:waterworks@robarindustries.com)