



PIPE SUPPORT STAND

APPLICATIONS

The Robar Pipe Support Cradle stand is available from 2"–36"

MATERIAL SPECIFICATIONS

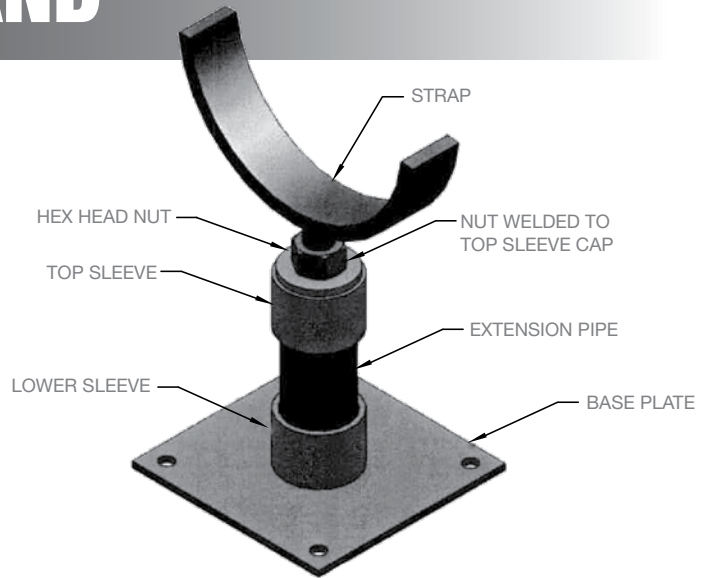
Base Plate: ASTM A36 Carbon Steel

Sleeve: ASTM A53 ERW Tubing

Stud: ASTM A36, Rolled Thread

Coating: Hot Dip Galvanized
Optional: Stainless Steel

Note: - All pipe cradle stands are formed to Ductile Iron radius.
- Extension pipe is not supplied. Customer to supply own:
2" schedule 40 for sizes 2-12"
4" schedule 40 for sizes 14-24"
6" schedule 40 for sizes 30-36"



FLANGE SUPPORT STAND

APPLICATIONS

The Robar Pipe Support Flange stand is available from 3"–24"

MATERIAL SPECIFICATIONS

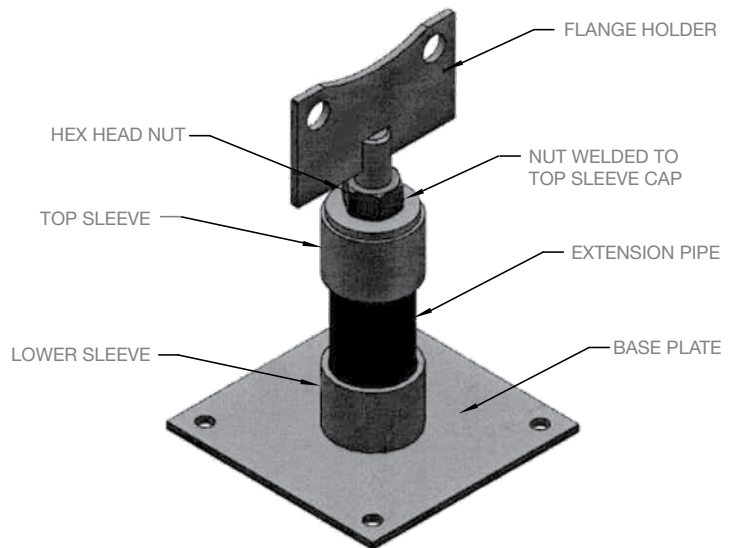
Base Plate: ASTM A36 Carbon Steel

Sleeve: ASTM A53 ERW Tubing

Stud: ASTM A36, Rolled Thread

Coating: Hot Dip Galvanized
Optional: Stainless Steel

Note: - Extension pipe is not supplied. Customer to supply own
2" schedule 40 pipe and field cut to required length.



ROBAR INDUSTRIES LTD.

www.robarindustries.com
waterworks@robarindustries.com

Surrey, British Columbia
Phone: 1-800-663-6553

Saint-Bruno, Quebec
Phone: 1-800-315-9525