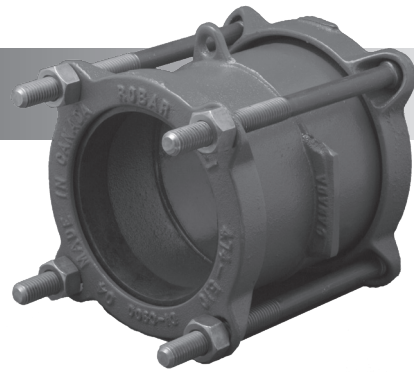




1408 / 1406

CAST DUCTILE IRON COUPLING



APPLICATIONS

ROBAR **1408 / 1406** Straight and Transition Couplings are used to make a non-restrained connection between two pipes of the same nominal size with same or different ODs. The **1406** is supplied with Stainless Steel fasteners.

MATERIAL SPECIFICATIONS

Center Sleeve:	Cast Ductile Iron
End Rings:	Cast Ductile Iron
Gaskets:	Nitrile (NBR) Rubber Other compounds available
Fasteners:	1408 —5/8" NC HSLA Steel 1406 —5/8" NC T304 Stainless Steel Nuts coated with anti-galling compound Torque is 70–80 ft. lbs.
Coating:	Two coats of Enamel
PSI Rating:	2" through 12" – 300psi 14" through 24" – 150 psi

HOW TO ORDER

Determine the product number (**1406, etc.**) and the pipe OD or end plate combination for each end of the coupling (see page 1.1.1, 1.1.2), and then use the appropriate ordering code as shown in the following example.

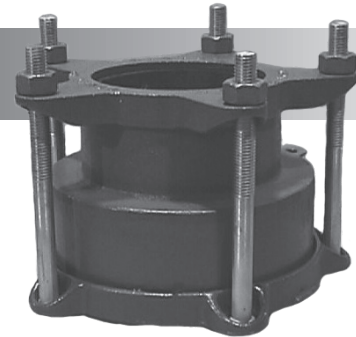
To couple a 6" Steel pipe (6.63" OD) to a 6" C900 PVC pipe (6.90" OD), using SS Bolts the ordering code is:

Product Number		OD (Actual)		OD (Actual)
1406	-	6.63"	x	6.90"
i.e. 1406 - 6.63 x 6.90 or 1406 - 6D3 x A1				



1408R / 1406R

CAST DUCTILE IRON REDUCING COUPLING



APPLICATIONS

ROBAR **1408R / 1406R** Reducing Couplings are used to make a non-restrained connection between two pipes of different nominal sizes. The **1406R** is supplied with Stainless Steel fasteners.

MATERIAL SPECIFICATIONS

Center Sleeve:	Cast Ductile Iron
End Rings:	Cast Ductile Iron
Gaskets:	Nitrile (NBR) Rubber Other compounds available
Fasteners:	1408R —5/8" NC HSLA Steel 1406R —5/8" NC T304 Stainless Steel Nuts coated with anti-galling compound Torque is 70–80 ft. lbs.
Coating:	Two coats of Enamel
PSI Rating:	2" through 12" – 300psi 14" through 24" – 150 psi

HOW TO ORDER

Determine the product number (**1406R, etc.**) and pipe OD or end plate combination for each end of the coupling (see page 1.2.1, 1.2.2), and then use the appropriate ordering code as shown in the following example.

To couple an 8" Ductile Iron pipe (9.05" OD) to a 6" C900 PVC pipe (6.90" OD) using SS Bolts, the ordering code is:

Product Number		OD (Actual)		OD (Actual)
1406R	-	9.05"	x	6.90"
i.e. 1406R - 9.05 x 6.90 or 1406R - 8A1 x 6A1				

CAUTION



Couplings do not prevent pipe pullout. Suitable restraint should be used when required.

ROBAR INDUSTRIES LTD.

www.robarindustries.com
waterworks@robarindustries.com

Surrey, British Columbia
Phone: 1-800-663-6553

Saint-Bruno, Quebec
Phone: 1-800-315-9525